

Name _____

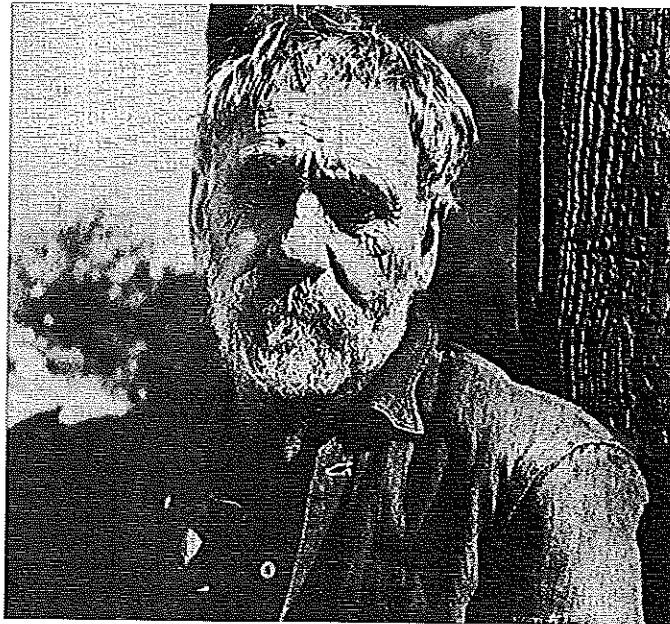
Date _____

UNIT 5
WORKSHEET 5

You and the New Deal

Directions: How would the New Deal have affected you? Think about this by imagining you are each of the people described below. What part of the New Deal might have helped you in your situation?

1. You are a farmer in a rural area, struggling with debt and low crop prices.
2. You are a middle-class office manager who can't make your mortgage payments and lost all your savings in banks.
3. You are a young person out of a job.
4. You are a factory worker with very low wages, no union, and poor working conditions.
5. You lost a bundle in the stock market.
6. You are a poor "starving" artist.
7. You are a 60-year-old person about to lose your job and with no savings or pension plan.



Name _____

Date _____

Be a New Deal Worker

So many people were out of work during the Great Depression that the New Deal included federal work programs. All kinds of unemployed people—skilled, unskilled, semi-skilled—could find a job set up and run by the government. They earned paychecks issued by the government.

Directions: Suppose you are out of work in the 1930s. Which of these government-sponsored jobs would you want to take and why? (You can choose multiple jobs, if you want to.) Write a paragraph for a job application that relates your interests and skills to the project(s) you want to work on.

Jobs with the CCC:

- planting trees in national forests
- restoring historic battlegrounds
- maintaining trails and campsites at national parks
- working on flood control and soil erosion projects

Jobs with the PWA and WPA:

- building Boulder Dam in Colorado
- building the Triborough Bridge or the Lincoln Tunnel in New York City
- creating the Mall in Washington, DC
- constructing a school building or hospital
- taking part in a federal arts program:
 - painting murals in public buildings (e.g., post offices, libraries, courthouses)
 - writing state guide books
 - recording people's oral histories
 - acting, directing, doing stagehand work in Federal Theatre Project shows

Workers in the Civilian Conservation Corps (CCC) were called the Soil Soldiers and Roosevelt's Tree Army.

The CCC was only for young men. People who objected to that asked, "Where's the she, she, she in the CCC?"

